

## December 2005 Specials

Nov 24 we will be closed for Thanksgiving.

Starting November 28, 2005 hours will be:

Monday - Friday 8am - 6:30pm EST

Saturdays from Dec 3 - Dec 17, 9am - 4pm EST

We will be closed Dec 24-26, 2005 and Jan 2, 2006

Triple Key @ 465AU

# Southeastern

Findings, Mountings, Tools and Wedding Bands



## Special Introductory Pricing



### Crisscross Style Mounting

"New Size"

14k Y/W or Platinum

1) 1ct, 2) .50ct

**19-383** 14k \$344

**A19-383** Plat \$1947



### Crisscross Style 5 Stone All Same Size Stones

14k Y/W

**19-37-050** holds 5) .10ct \$228

**19-37-075** holds 5) .15ct \$302

**19-37-100** holds 5) .20ct \$309

Platinum **A19-37-100** \$1368  
holds 5) .20ct



### Crisscross Style 3 Stone All Same Size Stones

14k Y/W

**19-393-100** holds 3) .33ct \$255

**19-393-150** holds 3) .50ct \$343

**19-393-225** holds 3) .75ct \$357



### Crisscross Style 3 Stone

14k Y/W

**19-388-125** holds 1) .65ct, 2) .30ct \$262

**19-388-150** holds 1) 1ct, 2) .25ct \$271

**19-388-250** holds 1) 1.25ct, 2) .65ct \$291



### 3 Stone Tops

All Same Size Stones

14k White

**3-25-075W** holds 3) .25ct \$58

**3-25-100W** holds 3) .33ct \$71

**3-25-150W** holds 3) .50ct \$82

**3-25-175W** holds 3) .58ct \$91

**3-25-225W** holds 3) .75ct \$94

**3-25-300W** holds 3) 1ct \$112

The following shanks can be used  
with 3 stone tops:

**SH30, SH31 or SH340 for 14k**  
**ASH310 or ASH340 for Platinum**



### Princess Cut Pendant Centered Bail

Style P493 Order by mm Size

14k Y/W

**3.25mm** \$20

**3.5mm** \$25

**4mm** \$26

**5mm** \$38

**6mm** \$46

### Wedding Band Specials Economy Weight 14k



#### 5mm 14k Y/W

Regular Wt	Sz 6	Sz 10
<b>WB250RE</b>	\$180.21	\$231.90

Inside Round		
<b>WB250IRE</b>	\$287.70	\$332.13

#### 6mm 14k Y/W

Regular Wt	Sz 6	Sz 10
<b>WB260RE</b>	\$233.25	\$257.88

Inside Round		
<b>WB260IRE</b>	\$326.16	\$369.96

### NEW Seamless Die Struck Princess Settings Available in 14k White, With or Without Peg

#### 2-627

3.5mm \$30

4.0mm \$31

4.5mm \$34

5.0mm \$38

5.5mm \$40

6.0mm \$42

6.5mm \$45

7.0mm \$51

7.5mm \$52

#### 2-627



2-628 Peg

#### 2-628 PEG

3.5mm \$32

4.0mm \$32

4.5mm \$36

5.0mm \$39

5.5mm \$41

6.0mm \$43

6.5mm \$46

7.0mm \$52

7.5mm \$53

*December 2005 Specials*

*Nov 24 we will be closed for Thanksgiving.*

*Starting November 28, 2005 hours will be:*

*Monday - Friday 8am - 6:30pm EST*

*Saturdays from Dec 3 - Dec 17, 9am - 4pm EST*

*We will be closed Dec 24-26, 2005 and Jan 2, 2006*



*Triple Key*

***Purchase 3 or more items and receive a 5% Discount on all.***



**Princess Solitaire Pendants**

Available in 14k Y/W, G-H SI  
**DP 10/7492/23** .10ct TW \$417  
**DP 18/7492/23** .18ct TW \$606  
**DP 40/7492/23** .40ct TW \$1170  
 Includes 18" Wheat Chain



**Princess 3 Stone Drop Pendants**

Available in 14k Y/W, G-H SI  
**UV 17/7495/23** .17ct TW \$540  
**UV 42/7495/23** .42ct TW \$1290  
 Includes 18" Rope Chain



**Cross Pendants**

Available in 14k Y/W, G-H I2  
**RV 49/7111/25** .49ct TW \$831  
**RV 65/7111/25** .65ct TW \$1044  
 Includes 18" Rope Chain

**14k Earrings**



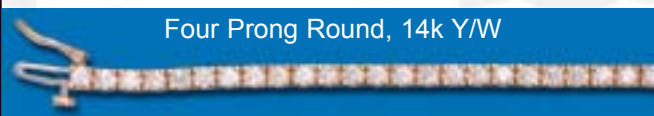
**UF 98/RDOV/2+4**

.98ct TW  
 G/H-SI3/I1  
 \$3825

**UF 95/RDPS/2+4**

.95ct TW  
 G/H-SI3/I1  
 \$4350

**Diamond Tennis Bracelets 14k**



Four Prong Round, 14k Y/W

1.00ct TW	<b>RB 100/7800/25</b>	G-H I2	\$1905
2.00ct TW	<b>RB 200/7800/25</b>	G-H I2	\$3045
3.00ct TW	<b>RB 300/7800/25</b>	G-H I2	\$4185



Round, 14k Y/W

1.97ct TW	<b>RB 197/7810/25</b>	G-H I2	\$2475
2.70ct TW	<b>RB 270/7810/25</b>	G-H I2	\$3180
3.60ct TW	<b>RB 360/7810/25</b>	G-H I2	\$4035



S Link Style Round, 14k Y/W

1.00ct TW	<b>RB 100/7876/25</b>	G-H I2	\$2115
2.00ct TW	<b>RB 200/7876/25</b>	G-H I2	\$3165
3.00ct TW	<b>RB 300/7876/25</b>	G-H I2	\$4725

**Inventory Closeouts, Limited Quantities Available**

**Heart Pendants 14k Y**  
 Chain Not Included



**UV 25/2381/PQ**  
 .25ct TW  
 Promotional Quality  
 \$192



**UV 50/2382/24**  
 .50ct TW  
 G-H I1  
 \$579



**UV 50/2316/24**  
 .50ct TW  
 G-H I1  
 \$594



**Baguette & Round Earrings**  
**UF 110/2379/24**  
 14KY, G-H I1  
 1.10ct TW  
 \$1689